

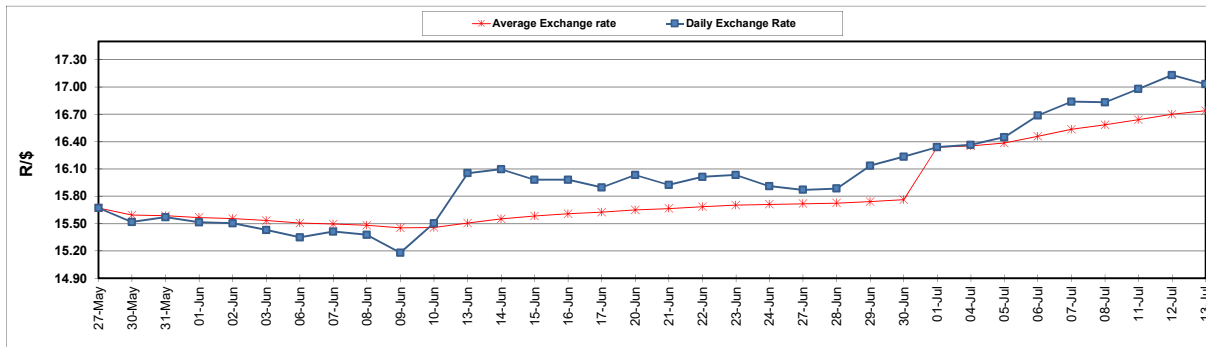
	PETROL 95 ULP	PETROL 93 ULP & LRP	DIESEL 0.05%	DIESEL 0.005%	ILL. PAR.
GAUTENG PUMP PRICE (SA c/l) AS FROM 06/07/2022	2,674.000	2,631.000	-	-	-
WHOLESALE PRICE (SA c/l) AS FROM 06/07/2022	-	-	2,540.440	2,552.840	1,986.288
SINGLE NATIONAL MAXIMUM RETAIL PRICE	-	-	-	-	2,623.000
BASIC FUEL PRICE - 13/07/2022 (SA c/l)	1,442.456	1,404.608	1,617.560	1,625.256	1,631.903
PRESS RELEASE CONTRIBUTION TO BFP 06/07/2022 - 13/07/2022 (SA c/l)	1,689.410	1,646.410	1,763.630	1,776.030	1,768.128
UNIT OVER/(UNDER) RECOVERY - 01/07/2022 (SA c/l)	246.954	241.802	146.070	150.774	136.225
AVERAGE BASIC FUEL PRICE 01/07/2022 - 13/07/2022	1,552.537	1,504.112	1,631.251	1,641.520	1,626.917
AVERAGE UNIT OVER/(UNDER) RECOVERY 01/07/2022 - 13/07/2022	76.207	88.298	80.379	82.843	85.878

ANALYSIS MOVEMENT OF AVERAGE OVER/(UNDER) RECOVERY

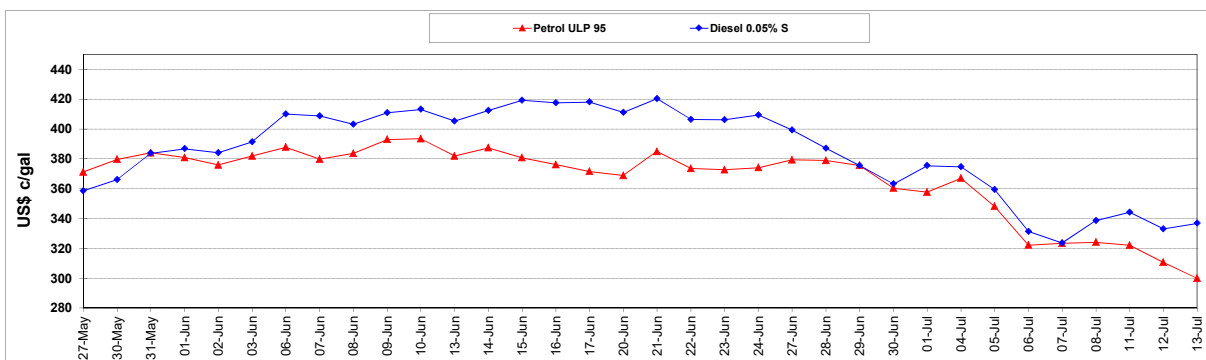
	PETROL 95	PETROL 93	DIESEL 0.05%	DIESEL 0.005%	ILL. PAR.
- MOVEMENT IN INTERNATIONAL PRODUCT PRICES	166.689	175.959	175.450	178.512	180.696
- MOVEMENT IN EXCHANGE RATE	(90.483)	(87.661)	(95.071)	(95.669)	(94.818)
AVERAGE UNIT OVER/(UNDER) RECOVERY 01/07/2022 - 13/07/2022	76.207	88.298	80.379	82.843	85.878

R/\$ EXCHANGE RATE - (R/\$17.0300 - 13/07/2022)

EXCHANGE RATE USED IN BASIC FUEL PRICE



INTERNATIONAL PRODUCT PRICES OF BASKET USED IN BASIC FUEL PRICE



BASIC FUEL PRICE IN SA CENTS PER LITRE

